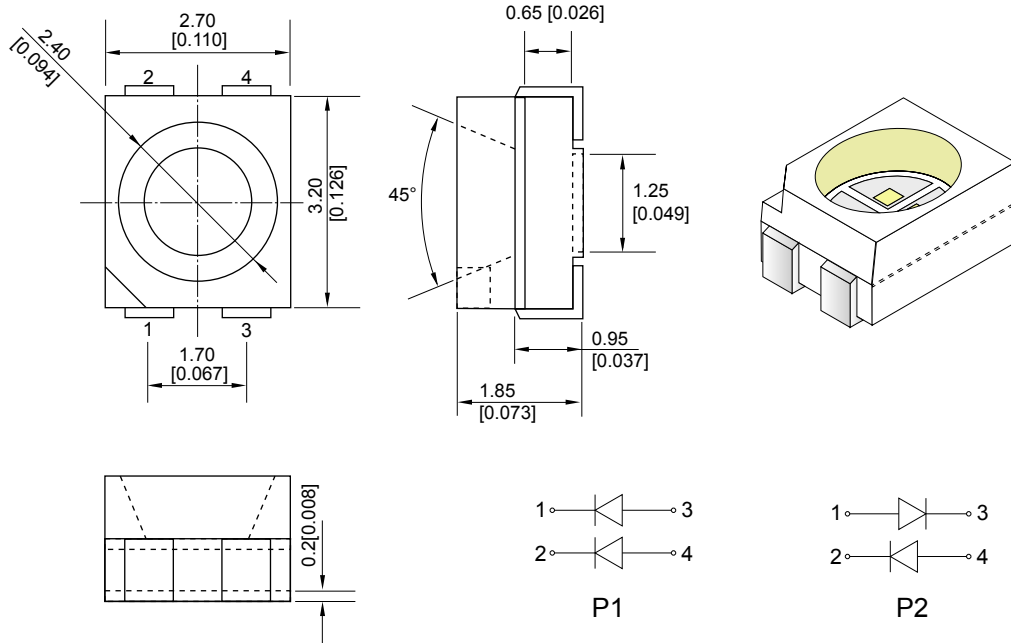
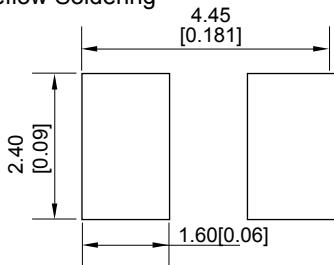


KTD310FJC



Recommended Soldering Pattern For Reflow Soldering



NOTES:

1. All dimensions are in millimeters (inches);
2. Tolerances are $\pm 0.2\text{mm}$ (0.008 inch) unless otherwise noted.

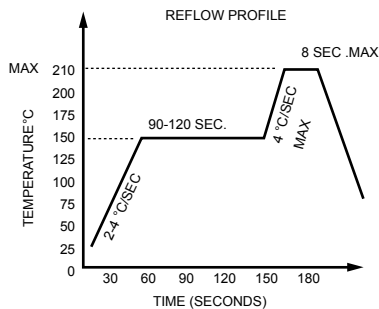
Soldering iron:

Basic speed is < 5sec when 260°C. If temperature is higher, time should be shorter (+10°C > -1sec). Power dissipation of iron should be smaller than 15W, and temperatures should be controllable. Surface temperature of the device should be under 230°C.

SMD Chip LED Lamps

Part Number	Wave Length λD (nm)	Emitting color	Lens Type	Vf(V)Typ	Iv(mcd)Typ	Viewing angle 2Θ1/2
				At 20mA		
KTD310FJC	620	Orange	Water Clear	2.00	120	120°
	570	Yellow Green		2.00	60	

Recommended Reflow Soldering Profile.



Directive Characteristics

